

Robe River Services Capability Statement



About Us

Robe River Services Pty Ltd (RRS) is an entity of Robe River Kuruma Aboriginal Corporation, developed to be a driver of economic opportunities for the Robe River Kuruma people and community.

Robe River Kuruma Aboriginal Corporation's vision is to 'establish a solid foundation towards independence, community wellbeing, cultural identity, and healthy Country now and for future generations'.

RRS has a mandate to build an economic base by generating self-determining revenue streams through commercial business, employment, and capacity building opportunities.

What We Do

RRS identifies emerging commercial opportunities across Robe River Kuruma Country that reflect the aspirations, objectives, and values of the Robe River Kuruma community.

These opportunities fall under two streams;

- 1. RRS Commercial enterprises** – opportunities are developed by RRS to generate revenue, employment, and other opportunities for the community.
- 2. RRK Business Support** – we help incubate and grow RRK owned businesses to undertake contracts on Robe River Kuruma Country.

Everything we do is underpinned by the values of the RRK community. Alongside commercial due diligence, we undertake a values-based evaluation of each opportunity to ensure that the social, environmental, and cultural impact of our decisions align with our vision for the community and RRK Country.

Our Values

- **Respect**
 - We respect all cultures and diverse languages and expect mutual respect in our engagement.
- **Inclusivity**
 - All activity is for direct benefit of RRKAC and members. Collaborative partnerships help build resilience and a stronger community.
- **Integrity**
 - We are honest, open, and transparent. We are fully accountable to the RRK people.
- **Cultural Security**
 - We commit to operating in a culturally safe environment.
- **Social Impact**
 - We value the impact of opportunities that improve the social, emotional, and cultural wellbeing of RRK people in equal value to the economic returns of that opportunity.

Our Services

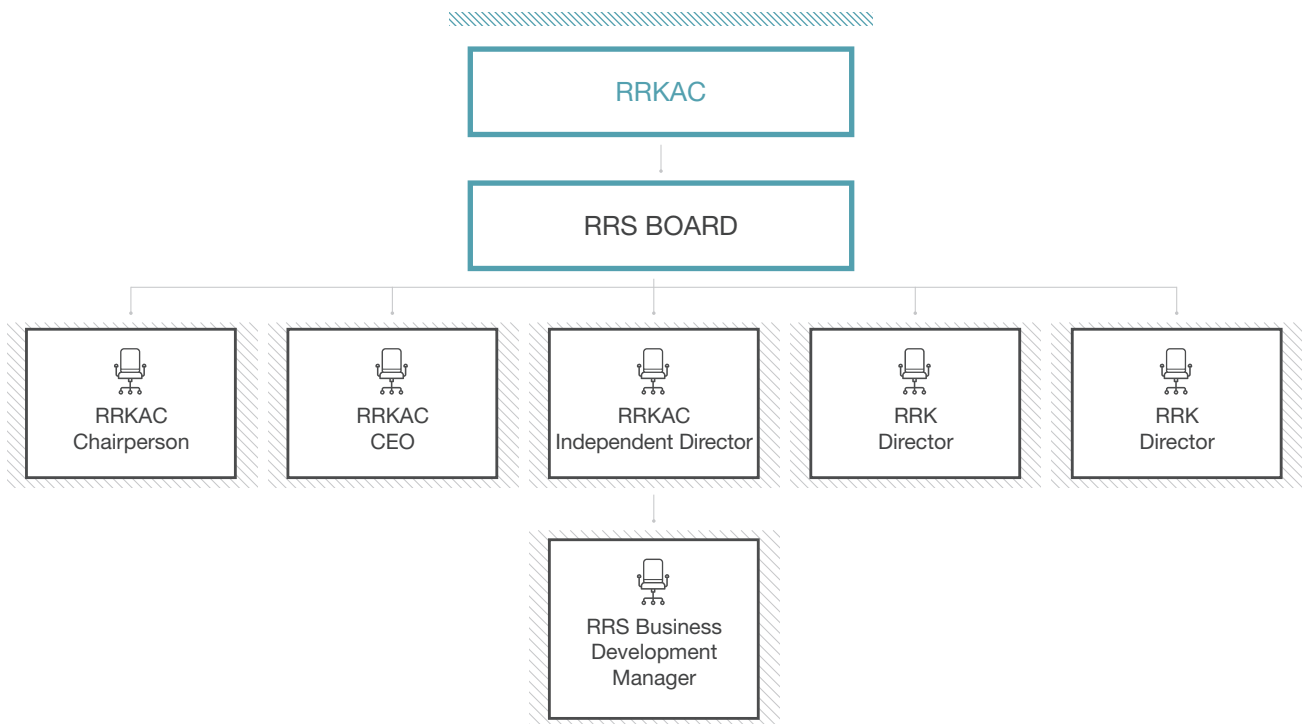
- Cultural Competence Training Vendor Services
- Robe River Kuruma Business Register
- Robe River Kuruma Business Support Hub

As we sustainably build our portfolio of enterprises, programs and services we aspire to identify partners to develop;

- Active Commercial Joint Ventures
- Green Energy Joint Ventures
- Environmental Management Enterprises

Our Team

RRS is led by Business Development Manager, Ashley Talbot, under the guidance of the RRS Board of Directors.



Our Partners



Contact Us

Unit 5 / 9 Hedland Place, Karratha WA 6714
 PO Box 1944, Karratha WA 6714
 08 9185 5005
info@roberiverservices.com.au